

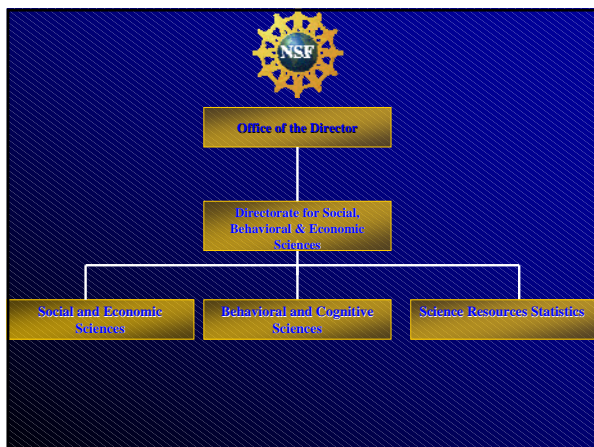
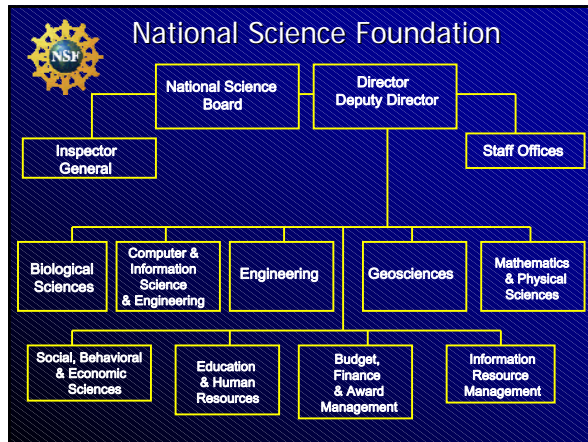


NSF/SBE FUNDING OPPORTUNITIES FOR INTERDISCIPLINARY RESEARCH

Cheryl L. Eavey

Program Director

Division of Social and Economic Sciences
Methodology, Measurement, and Statistics Program



Directorate for Social, Behavioral, and Economic Sciences (SBE)

- Supports research that builds fundamental knowledge of human behavior, interaction, and social and economic systems, organizations, and institutions.
- Provides tools for tracking the human and institutional resources vital to building the nation's science and engineering infrastructure.


Social and Economic Sciences

FY09 Program Allocations (millions of dollars)

• Decision, Risk, & Management Sciences	\$7.52
• Economics	\$25.81
• Innovation and Organizational Change	\$3.37
• Law and Social Science	\$5.08
• Methodology, Measurement & Statistics	\$4.03
• Political Science	\$9.95
• Science and Society	\$8.99
• Sociology	\$9.46

Methodology, Measurement, and Statistics (MMS)

- Supports the development of innovative analytical and statistical methods and models for the SBE sciences.
- Seeks proposals that are methodologically innovative, grounded in theory, and have potential utility for multiple fields within the social and behavioral sciences.
- Partners with a consortium of federal statistical agencies to support research proposals that further the development of new and innovative approaches to surveys and to the analysis of survey data.

Program Officer: Cheryl L. Eavey 



Behavioral and Cognitive Sciences

FY09 Program Allocations (millions of dollars)

- Archaeology & Archaeometry \$6.5
- Cultural Anthropology \$3.5
- Cognitive Neuroscience \$7.0
- Developmental & Learning Sciences \$6.3
- Geography & Spatial Sciences \$6.4
- Linguistics \$7.5
- Perception, Action, & Cognition \$6.4
- Physical Anthropology \$3.8
- Social Psychology \$5.9



Geography and Spatial Sciences (GSS)



- Supports research on human, physical, and biotic systems on the Earth's surface, as well as their related subfields.
- Investigations into the nature, causes, and consequences of human activity within particular "places and spaces" are encouraged.
- Both international & domestic projects which may contribute to related fields also are funded.

Program Officers: Tom Baerwald, Scott Freundsuh, and Ezekiel Kalipeni



Dear Colleague Letter: Environment, Society, and the Economy

SBE and GEO seek to increase collaboration between the geosciences and the social and behavioral sciences by augmenting funding for interdisciplinary research related to Environment, Society, and the Economy (NSF 10-03).



Special Program: Dynamics of Coupled Natural and Human Systems (CNH)

- Funds quantitative, interdisciplinary analyses of relevant human and natural system processes and complex interactions at diverse scales.
- First permanent interdirectorate program.



Program Officers: Tom Baerwald, Sarah Ruth, Alan Tessier, and Kathleen Weathers



Program Solicitation: Water Sustainability and Climate (WSC)

- Goal is to understand and predict the interactions between the water system and climate change, land use, the built environment, and ecosystem function and services through place-based research and integrative models.
- Successful proposals are expected to broadly integrate across the biosciences, geosciences, social sciences, and engineering enabling a new interdisciplinary paradigm in water research.

Program Officers: Bob O'Connor, Cheryl Eavey, and many others



Where Discoveries Begin

National Science Foundation